

Injury attendances to Trafford General Hospital Emergency Department

April 2009 to March 2010

This report summarises recorded injury attendances to Trafford General Emergency Department (ED) between April 2009 and March 2010.

Between April 2009 and March 2010 there were 54,619 injury attendances to Trafford General ED. Males accounted for over half (51%) of all attendances. The month with the highest injury attendances was July (n=4,943) with February (n=3,878) having the lowest attendances ([Figure 1](#)). The majority of attendances were recorded as other injury (94%). Road traffic collisions (RTCs) accounted for 3% of all injury attendances; sports injury accounted for 2% ([Table 1](#)).

For all injuries the highest proportion of attendances were for persons aged 20 to 34 (21%) and 5 to 19 (20%) ([Figure 2](#)). Almost four in ten (37%) of assault attendees were aged 20 to 34. Over four in ten (42%) of RTC attendees were aged 20 to 34 ([Figure 3](#)).

[Table 2](#) shows the ethnicity of attendees to Trafford General ED. Over four-fifths (82%) were white whilst one in ten (10%) were recorded as not known.

The disposal of a patient can give an indication of the severity of the injuries sustained. Nearly half (46%) of attendees were discharged, over a third (35%) were referred and 15% were admitted to hospital ([Table 3](#)). Seven in ten (70%) of RTC attendees were discharged. Over half (53%) of sports injury attendees

were discharged, while over two-fifths (44%) of deliberate self harm (DSH) attendees were admitted. ([Table 4](#)).

[Table 5](#) shows the arrival methods of attendances at Trafford General ED. Four-fifths (80%) of attendees arrived by private transport, whilst 16% arrived by ambulance.

[Figure 4 \(a-d\)](#) shows crude rates of attendance at Trafford General ED by area of residence, in this case Middle Super Output Area (MSOA). The MSOAs with the highest crude rates are indicated beneath each figure.¹

¹ Population figures are drawn from mid-2009 population estimates from the Office for National Statistics.

Figure 1: Trafford General ED: Total injury attendances by gender and month, April 2009 to March 2010

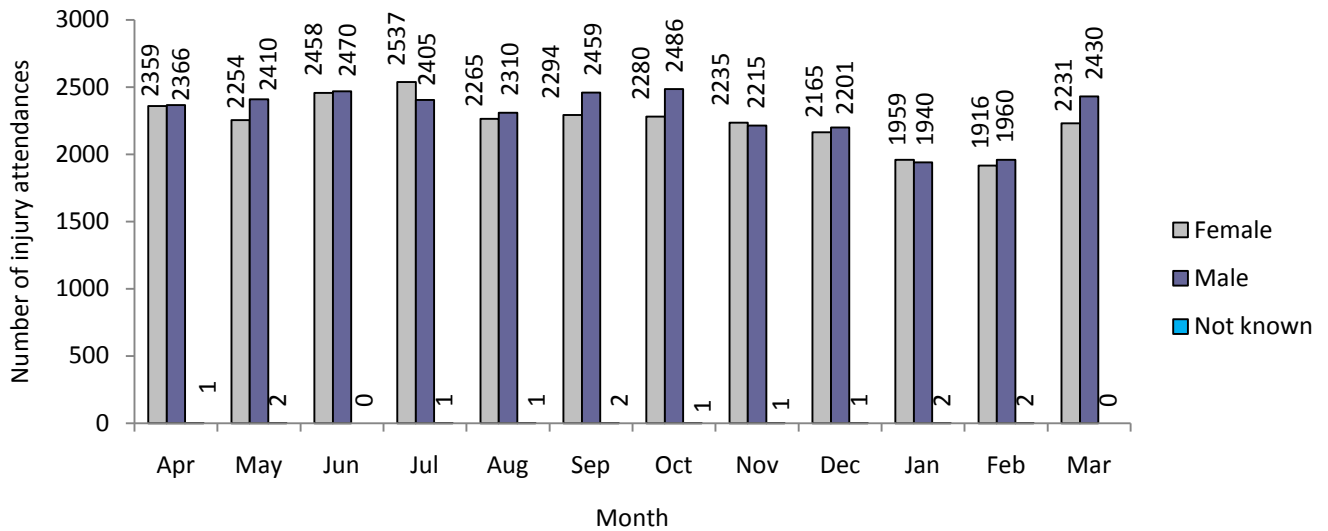
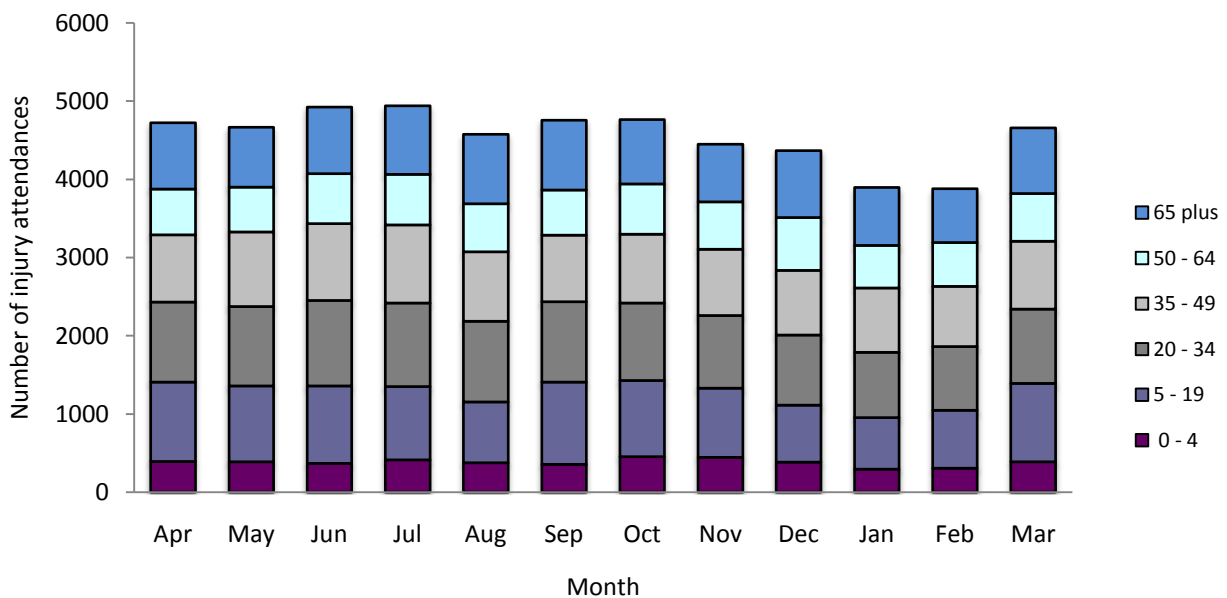


Table 1: Trafford General ED: Total injury attendances by injury group and month, April 2009 to March 2010²

Injury group	Apr	May	Jun	Jul	Aug	Sep	Oct	Nov	Dec	Jan	Feb	Mar	Total	%
Other injury	4456	4401	4654	4689	4365	4448	4467	4168	4184	3688	3626	4365	51511	94
RTC	105	136	137	117	100	121	141	131	93	85	126	113	1405	3
Sports injury	83	59	62	67	57	126	95	80	40	57	68	124	918	2
Assault	40	45	44	42	35	36	42	44	34	47	39	28	476	1
DSH	42	25	31	28	19	24	22	28	16	24	19	31	309	1
Total	4726	4666	4928	4943	4576	4755	4767	4451	4367	3901	3878	4661	54619	100

Figure 2: Trafford General ED: Total injury attendances by age group and month, April 2009 to March 2010



² Firework injury (n=2) and has been included in other injury due to low numbers.

Figure 3: Trafford General ED: Total injury attendances by age group and injury group, April 2009 to March 2010 (excluding other injury)

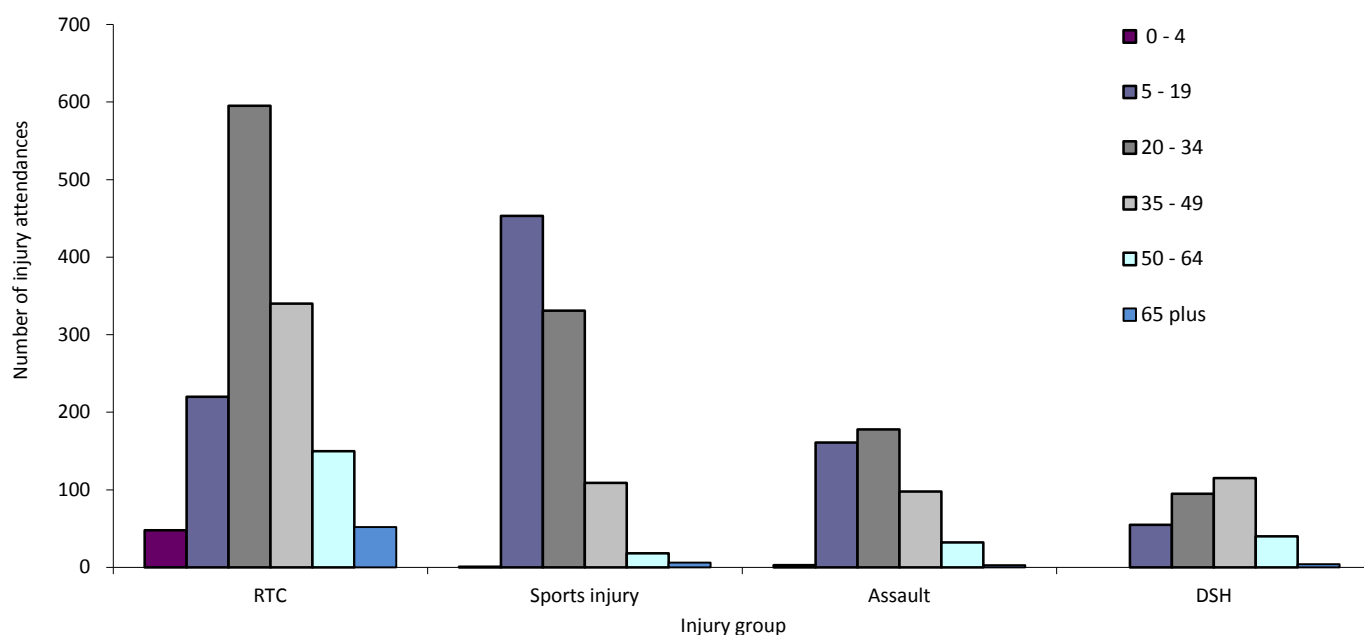


Table 2: Trafford General ED: Total injury attendances by ethnicity and month, April 2009 to March 2010³⁴

Ethnicity	Apr	May	Jun	Jul	Aug	Sep	Oct	Nov	Dec	Jan	Feb	Mar	Total	%*
White	3578	3544	4011	3943	3695	3889	3919	3798	3768	3298	3207	3866	44516	82
Not known	810	708	516	601	512	538	404	256	221	276	316	425	5583	10
Pakistani	96	106	111	104	103	70	108	108	109	69	108	107	1199	2
Black	59	61	67	66	86	69	80	67	70	55	74	62	816	1
Indian	64	69	72	68	59	43	95	70	59	65	52	54	770	1
Any other ethnic group	50	78	57	45	41	60	65	62	59	62	47	58	684	1
Mixed	39	60	67	68	52	55	66	58	54	48	40	56	663	1
Any other Asian background	15	15	16	27	16	17	19	21	13	8	15	17	199	0
Chinese	7	16	6	14	**	9	**	6	9	15	**	**	124	0
Bangladeshi	8	9	5	7	**	5	**	5	5	5	**	**	65	0
Total	4726	4666	4928	4943	4576	4755	4767	4451	4367	3901	3878	4661	54619	100

*Percentages may not add up to one hundred due to rounding

Table 3: Trafford General ED: Total injury attendances by method of disposal and month, April 2009 to March 2010⁵

Disposal	Apr	May	Jun	Jul	Aug	Sep	Oct	Nov	Dec	Jan	Feb	Mar	Total	%
Discharged	2259	2525	2579	2699	2253	2250	2076	1797	1726	1480	1426	1821	24891	46
Referral / follow-up	1451	1365	1442	1415	1567	1628	1759	1679	1608	1553	1593	1908	18968	35
Admitted	736	576	634	620	575	636	693	752	733	707	638	732	8032	15
Other	280	200	273	209	181	241	239	223	300	161	221	200	2728	5
Total	4726	4666	4928	4943	4576	4755	4767	4451	4367	3901	3878	4661	54619	100

³ Please note that all numbers less than five have been suppressed in line with patient confidentiality and if there is only one number <5 in a category then two numbers will be suppressed at the next level.

⁴ White = Irish, British, other white background; Mixed = white and black, white and Asian, mixed any other; Other = any other ethnic group, any other Asian background; Black = African, Caribbean, other black.

⁵ Admitted=admitted to hospital/became a lodged patient of the same health care provider; Discharged=discharged - did not require any follow up treatment; Referral/follow-up =discharged - follow up treatment to be provided by GP, referred to ED clinic, referred to fracture clinic, referred to other out-patient clinic, referred to other health care professional; Other=died in department, left department before being treated, left department having refused treatment, other.

Table 4: Trafford General ED: Total injury attendances by method of disposal and injury group, April 2009 to March 2010

Disposal	Assault		DSH		Other injury		RTC		Sports injury		Total	
	n	%	n	%	n	%	n	%	n	%	n	%
Discharged	191	40	19	6	23202	45	988	70	491	53	24891	46
Referral / follow-up	190	40	136	44	17942	35	338	24	362	39	18968	35
Admitted	38	8	114	37	7838	15	25	2	17	2	8032	15
Other	57	12	40	13	2529	5	54	4	48	5	2728	5
Total	476	100	309	100	51511	100	1405	100	918	100	54619	100

Table 5: Trafford General ED: Total injury attendances by mode of arrival and month, April 2009 to March 2010

Arrival mode	Apr	May	Jun	Jul	Aug	Sep	Oct	Nov	Dec	Jan	Feb	Mar	Total	%
Private transport	3818	3808	4046	4073	3744	3883	3788	3503	3400	3019	3078	3767	43927	80
Ambulance	755	730	752	740	709	719	803	783	803	730	667	756	8947	16
Foot	58	56	63	70	60	66	73	88	71	81	60	60	806	1
Public transport	80	58	48	46	53	74	90	63	78	64	61	62	777	1
Police	15	14	19	14	10	13	13	14	15	7	12	16	162	0
Total	4726	4666	4928	4943	4576	4755	4767	4451	4367	3901	3878	4661	54619	100

Author: Ian Warren

Published: November 2010

For further information please contact:

Centre for Public Health, Research Directorate, Liverpool John Moores University,
3rd Floor, Henry Cotton Building, 15-21 Webster Street, Liverpool, L3 2ET.

Tel: 0151 231 4513 or Email: i.j.warren@ljmu.ac.uk

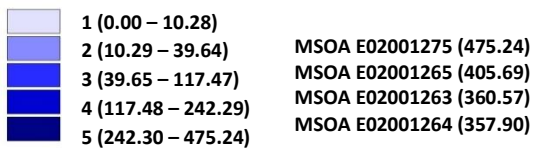
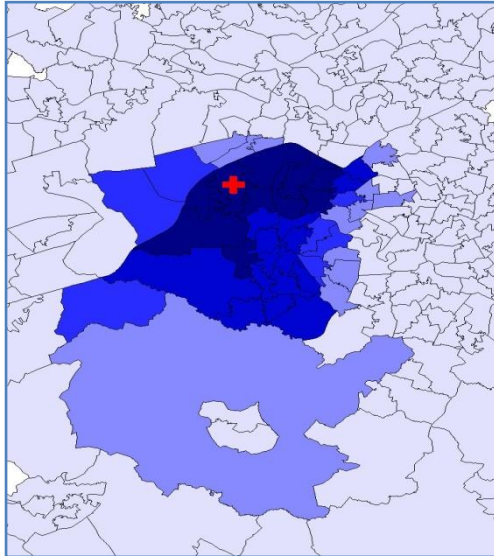
Website: www.tiig.info (data requests should be made through the website)



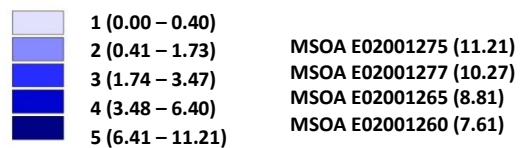
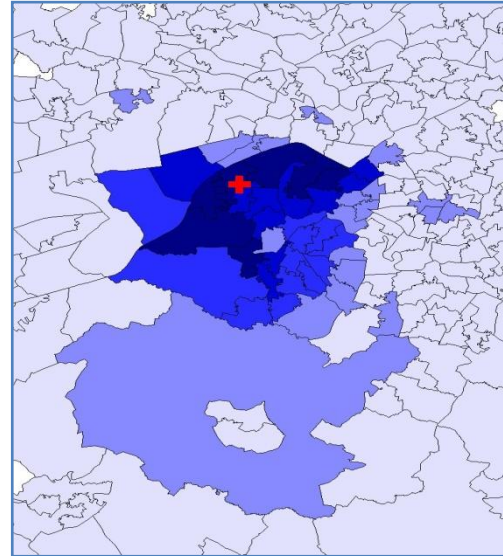
**Figure 4a,b,c,d: Middle Super Output Area of residence for injury attendances to Trafford General ED.
Quintiles of crude rates per 1,000 population, April 2009 to March 2010**

a) All injury attendances: quintiles of crude rates per 1,000 population b) RTC: quintiles of crude rates per 1,000 population

+ Trafford General ED

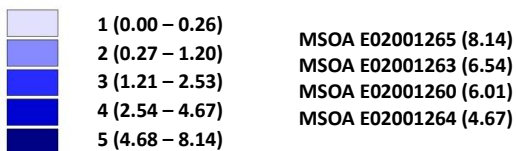
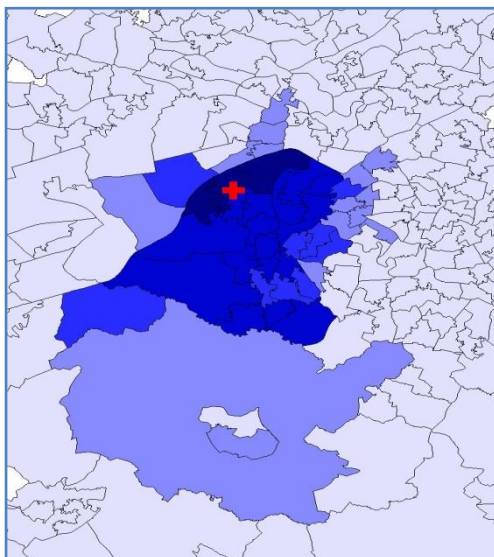


+ Trafford General ED



c) Sports injury: quintiles of crude rates per 1,000 population

+ Trafford General ED



d) Assault: quintiles of crude rates per 1,000 population

+ Trafford General ED

